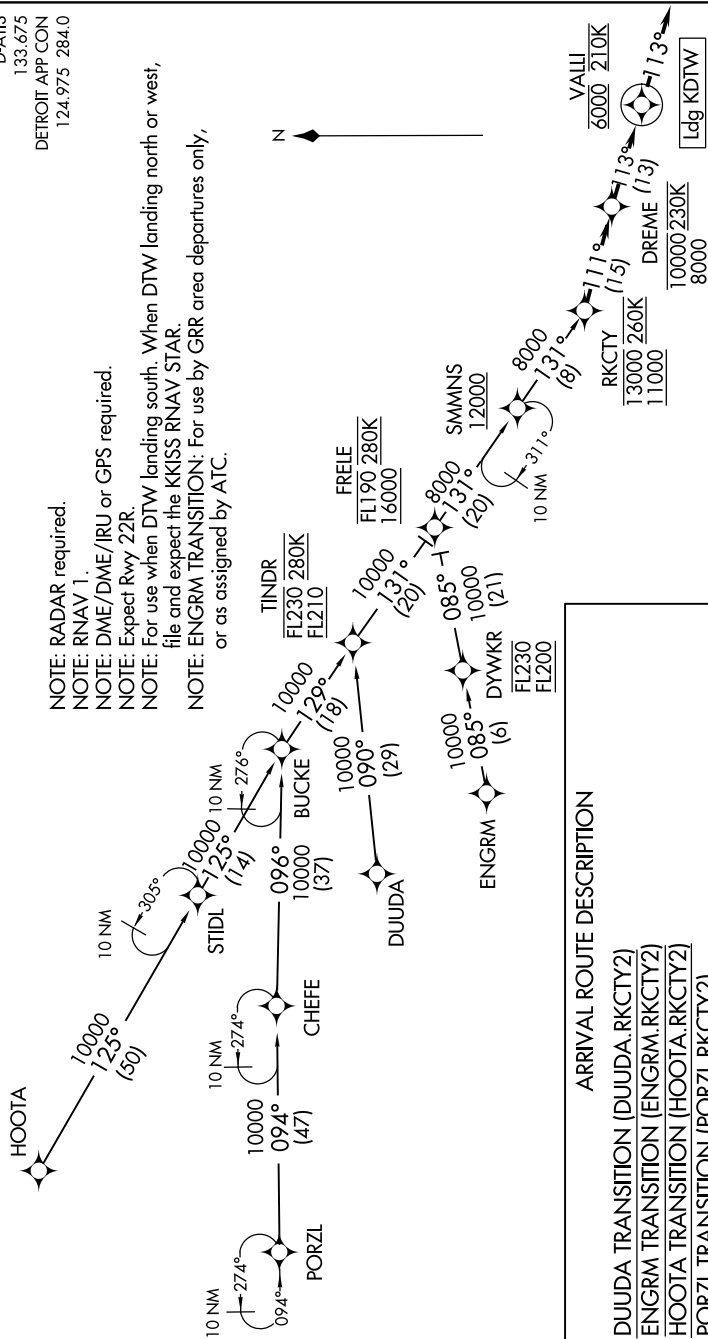


D-AITS  
133.675  
DETROIT APP CON  
124.975 284.0

NOTE: RADAR required.  
NOTE: RNAV 1.  
NOTE: DME/DME/IRU or GPS required.  
NOTE: Expect Rwy 22R.  
NOTE: For use when DTW landing south. When DTW landing north or west, file and expect the KISS RNAV STAR.  
NOTE: ENGRM TRANSITION: For use by GRR area departures only, or as assigned by ATC.



NOTE: Chart not to scale.

ARRIVAL ROUTE DESCRIPTION

- DUUDA TRANSITION (DUUDA.RKCTY2)
- ENGRM TRANSITION (ENGRM.RKCTY2)
- HOOOA TRANSITION (HOOOA.RKCTY2)
- PORZL TRANSITION (PORZL.RKCTY2)

From RKCTY on track 111° to cross DREME between 8000 and 10000 and at 230K, then on track 113° to cross VALLI at 6000 and at 210K, then on track 113°. Expect RADAR vectors to final approach course.

LOST COMMUNICATIONS

From VALLI, execute RNAV (GPS) Y RWY 22R or ILS Y RWY 22R approach.