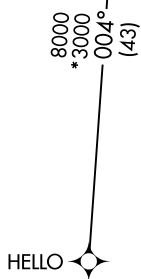
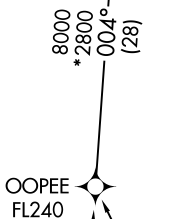
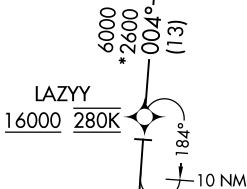
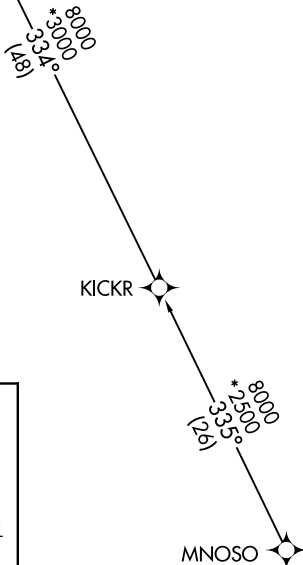


BLUEM FOUR ARRIVAL (RNAV) Transition Routes AL-264 (FAA) MINNEAPOLIS, MINNESOTA

MINNEAPOLIS APP CON
135.475 335.5
D-ATIS ARR
135.35 239.275



NOTE: RADAR required.
 NOTE: RNAV 1.
 NOTE: DME/DME/IRU or GPS required.
 NOTE: For turbojet aircraft only.
 NOTE: Expect "descend via" clearance and runway transition assignment by Center. Approach will assign landing runway.
 NOTE: Turbojet aircraft descend via Mach number until intercepting 280K. Maintain 280K until slowed by the STAR, or assigned by ATC.
 NOTE: HELLO transition ATC assigned only.



(CONTINUED ON FOLLOWING PAGE)

- HELLO TRANSITION (HELLO.BLUEM4)
- KICKR TRANSITION (KICKR.BLUEM4)
- LAZYY TRANSITION (LAZYY.BLUEM4)
- MNOSO TRANSITION (MNOSO.BLUEM4)
- OOPEE TRANSITION (OOPEE.BLUEM4)

NOTE: Chart note to scale.

NC-1, 15 MAY 2025 to 12 JUN 2025

NC-1, 15 MAY 2025 to 12 JUN 2025