

AGUDE FIVE ARRIVAL

AL-263 (FAA)

MINNEAPOLIS-ST PAUL, MINNESOTA

NC-1, 15 MAY 2025 to 12 JUN 2025

NOTE: Chart not to scale.

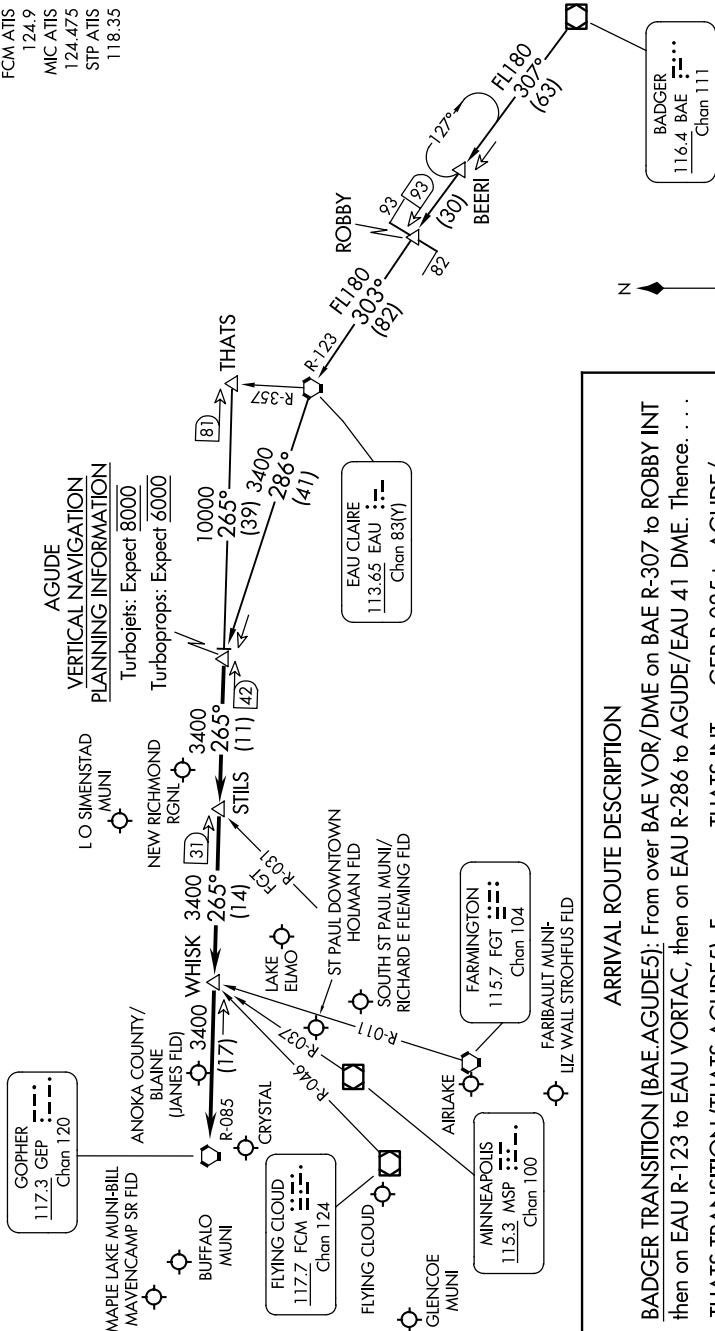
NOTE: DME and RADAR required.

MINNEAPOLIS APP CON
121.2 335.5
ANE ATIS
120.625
FCM ATIS
124.9
MIC ATIS
124.475
STP ATIS
118.35

AGUDE

VERTICAL NAVIGATION PLANNING INFORMATION

Turbolojets: Expect **8000**
Turboprops: Expect **6000**



ARRIVAL ROUTE DESCRIPTION

BADGER TRANSITION (BAE.AGUDE5): From over BAE VOR/DME on BAE R-307 to ROBBY INT then on EAU R-123 to EAU VORTAC, then on EAU R-286 to AGUDE/EAU 41 DME. Thence. . . .

THATS TRANSITION (THATS.AGUDE5): From over THATS INT on GEP R-085 to AGUDE/ GEP 42 DME. Thence. . . .

. . . . From over AGUDE/ GEP 42 DME via GEP R-085 to GEP VORTAC, then expect RADAR vectors to final approach course.

AGUDE FIVE ARRIVAL

NC-1, 15 MAY 2025 to 12 JUN 2025